

Music for Orchestra

J. Mouret

Arr. P. Martin

Rondeau



mm

Mainstream Music

Music for Orchestra

J. Mouret

Arr. P. Martin

Rondeau

mm

Mainstream Music

Rondeau

J. Mouret
Arr. P. Martin

Maestoso ♩ = 120

Flute *f*

Oboe *f*

Clarinet in Bb *f*

Bassoon *f*

Horn in F *f*

Trumpet in Bb *f*

Trombone *f*

Timpani GAD *f*

Maestoso ♩ = 120

Violin I *f*

Violin II *f*

Viola *f*

Violoncello *f*

Double bass *f*

7

Fl.

Ob.

Cl.

Bsn.

Hn.

Tpt.

Tbn.

Timp.

Vln I

Vln II

Vla.

Vc.

Db.

Detailed description of the musical score: This page of a musical score, page 2, begins at measure 7. The score is for a symphony orchestra and is written in 2/4 time with a key signature of two sharps (F# and C#). The instruments and their parts are as follows: Flute (Fl.) plays a melodic line with eighth and sixteenth notes; Oboe (Ob.) plays a similar melodic line; Clarinet (Cl.) plays a harmonic accompaniment with chords and eighth notes; Bassoon (Bsn.) plays a bass line with eighth notes; Horn (Hn.) and Trumpet (Tpt.) play a melodic line with eighth notes; Trombone (Tbn.) plays a bass line with eighth notes; Timpani (Timp.) plays a rhythmic pattern of eighth notes; Violin I (Vln I) and Violin II (Vln II) play a melodic line with eighth notes; Viola (Vla.) plays a bass line with eighth notes; Violoncello (Vc.) and Double Bass (Db.) play a bass line with eighth notes. The score is divided into five measures by vertical bar lines. A rehearsal mark '7' is placed above the first measure. The notation includes various note values, rests, and dynamic markings.

18

Fl.

Ob.

Cl.

Bsn.

Hn.

Tpt.

Tbn.

Timp.

Vln I

Vln II

Vla.

Vc.

Db.

mf

mf

mf

mf

V

V

24

Fl.

Ob.

Cl.

Bsn.

Hn.

Tpt.

Tbn.

Timp.

Vln I.

Vln II.

Vla.

Vc.

Db.

f

30

Fl.

Ob.

Cl.

Bsn.

Hn.

Tpt.

Tbn.

Timp.

Vln I

Vln II

Vla.

Vc.

Db.

35

Fl.

Ob.

Cl.

Bsn.

Hn.

Tpt.

Tbn.

Timp.

Vln I

Vln II

Vla.

Vc.

Db.

40

Fl.

Ob.

Cl.

Bsn.

Hn.

Tpt.

Tbn.

Timp.

Vln I

Vln II

Vla.

Vc.

Db.

mf

mf

mf

mf

mf

mf

mf

Detailed description: This page of a musical score covers measures 40 through 43. The woodwind section (Flute, Oboe, Clarinet, Bassoon, Horn, Trumpet, Trombone) and the percussion section (Timpani) are mostly silent, with rests in measures 41-43. The string section (Violin I, Violin II, Viola, Violoncello, Double Bass) is active throughout. In measure 40, the strings play a rhythmic pattern of eighth notes. In measure 41, the dynamic marking *mf* (mezzo-forte) is introduced. From measure 42 onwards, the strings play a more complex rhythmic pattern, including sixteenth notes and eighth notes, maintaining the *mf* dynamic. The score is written in a key signature of two sharps (F# and C#) and a common time signature.

45

Fl. *p*

Ob. *p*

Cl. *p*

Bsn. *p*

Hn. *p*

Tpt. *p*

Tbn. *p*

Timp.

Vln I *mf*

Vln II *mf*

Vla. *mf*

Vc. *mf*

Db. *mf*

Detailed description: This page of a musical score, numbered 45, contains measures 45 through 50. The score is arranged in a system with woodwinds and strings. The woodwind section includes Flute (Fl.), Oboe (Ob.), Clarinet (Cl.), Bassoon (Bsn.), Horn (Hn.), Trumpet (Tpt.), and Trombone (Tbn.). The string section includes Violin I (Vln I), Violin II (Vln II), Viola (Vla.), Violoncello (Vc.), and Double Bass (Db.). The key signature is one sharp (F#), and the time signature is 4/4. Measures 45 and 46 show the woodwinds and strings playing a melodic line. Measures 47 and 48 feature a dynamic shift to *mf* (mezzo-forte) for the strings, with a *V* (crescendo) marking above the notes. Measures 49 and 50 continue the melodic development. The Flute, Oboe, Clarinet, Bassoon, Horn, Trumpet, and Trombone parts are marked with a *p* (piano) dynamic throughout the measures shown.

51

Fl. *p*

Ob. *p*

Cl. *p*

Bsn. *p*

Hn. *p*

Tpt. *p*

Tbn. *p*

Timp.

Vln I *mf*

Vln II *mf*

Vla. *mf*

Vc. *mf*

Db. *mf*

Detailed description: This page of a musical score covers measures 51 through 56. The woodwind section (Flute, Oboe, Clarinet, Bassoon, Horn, Trumpet, Trombone) plays a melodic line starting in measure 51, marked *p* (piano). The strings (Violin I, Violin II, Viola, Violoncello, Double Bass) enter in measure 53 with a *mf* (mezzo-forte) dynamic. The score includes various musical notations such as rests, notes, and dynamic markings.

57

This musical score page, numbered 11, covers measures 57 through 60. The key signature is one sharp (F#), and the time signature is 4/4. The score is arranged in a standard orchestral layout with the following parts:

- Flute (Fl.):** Remains silent until measure 59, where it enters with a forte (*f*) dynamic, playing a rhythmic eighth-note pattern.
- Oboe (Ob.):** Remains silent until measure 59, where it enters with a forte (*f*) dynamic, playing a rhythmic eighth-note pattern.
- Clarinet (Cl.):** Remains silent until measure 59, where it enters with a forte (*f*) dynamic, playing a rhythmic eighth-note pattern.
- Bassoon (Bsn.):** Remains silent until measure 59, where it enters with a forte (*f*) dynamic, playing a rhythmic eighth-note pattern.
- Horn (Hn.):** Remains silent until measure 59, where it enters with a forte (*f*) dynamic, playing a rhythmic eighth-note pattern.
- Trumpet (Tpt.):** Remains silent until measure 59, where it enters with a forte (*f*) dynamic, playing a rhythmic eighth-note pattern.
- Tuba (Tbn.):** Remains silent until measure 59, where it enters with a forte (*f*) dynamic, playing a rhythmic eighth-note pattern.
- Timpani (Timp.):** Remains silent until measure 59, where it enters with a forte (*f*) dynamic, playing a rhythmic eighth-note pattern.
- Violin I (Vln I):** Plays a melodic line starting in measure 57, featuring eighth-note and quarter-note patterns, ending with a forte (*f*) dynamic in measure 60.
- Violin II (Vln II):** Plays a melodic line starting in measure 57, featuring eighth-note and quarter-note patterns, ending with a forte (*f*) dynamic in measure 60.
- Viola (Vla):** Plays a melodic line starting in measure 57, featuring eighth-note and quarter-note patterns, ending with a forte (*f*) dynamic in measure 60.
- Violoncello (Vc.):** Plays a melodic line starting in measure 57, featuring eighth-note and quarter-note patterns, ending with a forte (*f*) dynamic in measure 60.
- Double Bass (Db.):** Plays a melodic line starting in measure 57, featuring eighth-note and quarter-note patterns, ending with a forte (*f*) dynamic in measure 60.

The score includes dynamic markings of *f* (forte) for the woodwinds, brass, and percussion in measures 59 and 60. The string parts also feature a forte (*f*) dynamic in measure 60. The notation includes various note values, rests, and articulation marks such as accents and slurs.

63

Fl.

Ob.

Cl.

Bsn.

Hn.

Tpt.

Tbn.

Timp.

Vln I

Vln II

Vla.

Vc.

Db.

molto rall.

73

The image shows a page of a musical score for a symphony orchestra, page 14, measures 73-77. The score is written for the following instruments: Flute (Fl.), Oboe (Ob.), Clarinet (Cl.), Bassoon (Bsn.), Horn (Hn.), Trumpet (Tpt.), Trombone (Tbn.), Timpani (Timp.), Violin I (Vln I), Violin II (Vln II), Viola (Vla), Violoncello (Vc.), and Double Bass (Db.). The key signature is three sharps (F#, C#, G#) and the time signature is 4/4. The tempo marking "molto rall." is placed above the Flute and Violin I staves. The music features a variety of rhythmic patterns, including eighth and sixteenth notes, and rests. The Flute part has a melodic line with some grace notes. The Oboe and Clarinet parts have more rhythmic, eighth-note patterns. The Bassoon and Trombone parts are mostly sustained notes. The Horn and Trumpet parts have melodic lines. The Timpani part has a rhythmic pattern of eighth notes. The Violin I and II parts have melodic lines. The Viola and Violoncello parts have sustained notes. The Double Bass part has a simple rhythmic pattern of quarter notes.

Rondeau

J. Mouret
Arr. P. Martin

Maestoso ♩ = 120

7 *f*

12

18 *mf*

24 *f*

29 *f*

35

40 *p* *p*

52 *f*

64 *ff*

70 *ff*

74 *molto rall.*

Rondeau

J. Mouret
Arr. P. Martin

Maestoso ♩ = 120

1 *f*

7

13

19 *mf*

25 *f*

31

37 **4**

46 *p* **3** *p* **7**

61 *f*

67 *ff*

72 *molto rall.*

Rondeau

J. Mouret
Arr. P. Martin

Maestoso $\text{♩} = 120$

f

7

12

18

mf

25

30

f

35

40

4

3

52

7

p

p

64

f

70

ff

74

molto rall.

Bassoon

Rondeau

J. Mouret
Arr. P. Martin

Maestoso ♩ = 120

9

f

17

mf

24

f

31

p

38

p

48

p

63

p *f*

70

ff

molto rall.

Rondeau

J. Mouret
Arr. P. Martin

Maestoso ♩ = 120

f

7

12

mf

18

25

f

30

35

40

p

p

52

f

64

ff

70

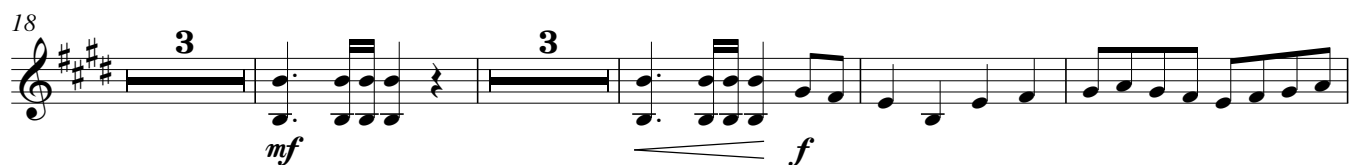
74

molto rall.

Rondeau

J. Mouret
Arr. P. Martin

Maestoso ♩ = 120



Trombone

Rondeau

J. Mouret
Arr. P. Martin

Maestoso ♩ = 120

9

17

32

39

51

64

70

molto rall.

Rondeau

J. Mouret
Arr. P. Martin

Maestoso ♩ = 120

G A D

7

12

18

30

35

40

64

69

73

Rondeau

J. Mouret
Arr. P. Martin

Maestoso ♩ = 120

f

7

13 *mf*

19

25 *f*

31

37 *mf*

43 *mf*

49 *mf*

55

61 *f*

67

72 *ff* **molto rall.**

Rondeau

J. Mouret
Arr. P. Martin

Maestoso ♩ = 120

f

7

13 *mf*

19 *f*

26

32

38 *mf*

44 *mf*

50 *mf*

57 *f*

63

69 *ff*

73 *molto rall.*

Violin III
(in lieu of Viola)

Rondeau

J. Mouret
Arr. P. Martin

Maestoso ♩ = 120

9

17

23

30

37

44

50

57

64

70

f

mf

f

mf

mf

f

mf

f

ff

molto rall.

Rondeau

J. Mouret
Arr. P. Martin

Maestoso ♩ = 120

9

f

17

mf

23

f

30

mf

37

mf

44

mf

50

mf

57

f

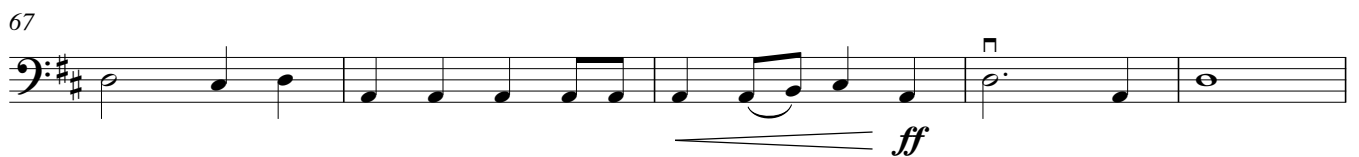
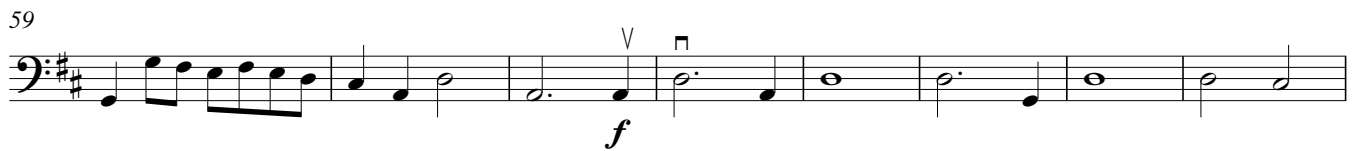
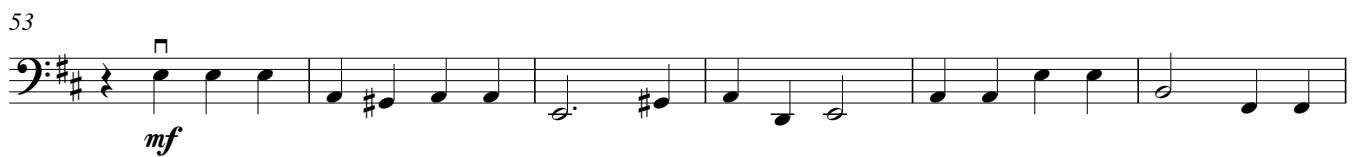
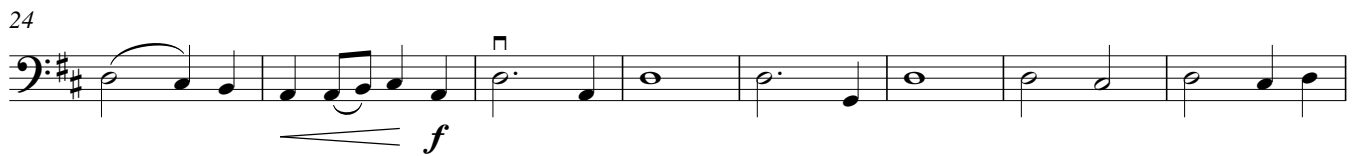
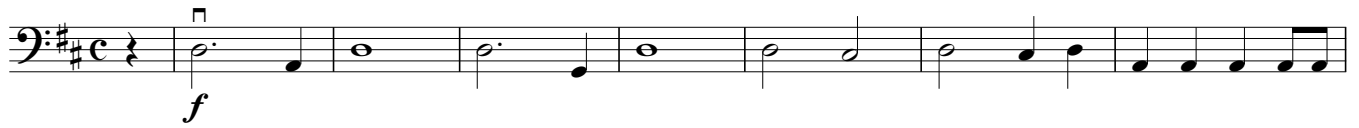
64

ff

70

molto rall.

Rondeau

J. Mouret
Arr. P. MartinMaestoso $\text{♩} = 120$ 

Rondeau

J. Mouret
Arr. P. Martin

Maestoso ♩ = 120

9

17

24

32

39

45

51

58

65

71

77