

Highly Strung

20 pieces for beginning string players by Peter Martin



mm

Mainstream Music

Highly Strung

20 pieces for beginning string players by Peter Martin



mm

Mainstream Music

Highly Strung

20 pieces for beginning violinists



Barney's Boogie

D 2 bars intro

1 2 3 4 1 2 3 4

1 2 3 4 1 2 3 4

Musical notation for 'Barney's Boogie'. It consists of two staves in 4/4 time. The first staff starts with a D chord (open strings) and a 2-bar intro. The melody is: G4 (quarter), A4 (quarter), B4 (quarter), C5 (quarter), G4 (quarter), A4 (quarter), B4 (quarter), C5 (quarter), G4 (quarter), A4 (quarter), B4 (quarter), C5 (quarter), G4 (quarter), A4 (quarter), B4 (quarter), C5 (quarter). The second staff continues the melody: G4 (quarter), A4 (quarter), B4 (quarter), C5 (quarter), G4 (quarter), A4 (quarter), B4 (quarter), C5 (quarter), G4 (quarter), A4 (quarter), B4 (quarter), C5 (quarter), G4 (quarter), A4 (quarter), B4 (quarter), C5 (quarter). The piece ends with a repeat sign.

Rock It

4 bars intro

Musical notation for 'Rock It'. It consists of two staves in 4/4 time. The first staff starts with a 4-bar intro. The melody is: G4 (quarter), A4 (quarter), B4 (quarter), C5 (quarter), G4 (quarter), A4 (quarter), B4 (quarter), C5 (quarter), G4 (quarter), A4 (quarter), B4 (quarter), C5 (quarter), G4 (quarter), A4 (quarter), B4 (quarter), C5 (quarter). The second staff continues the melody: G4 (quarter), A4 (quarter), B4 (quarter), C5 (quarter), G4 (quarter), A4 (quarter), B4 (quarter), C5 (quarter), G4 (quarter), A4 (quarter), B4 (quarter), C5 (quarter), G4 (quarter), A4 (quarter), B4 (quarter), C5 (quarter). The piece ends with a repeat sign.

Easy Going

8 bars intro

Musical notation for 'Easy Going'. It consists of two staves in 4/4 time. The first staff starts with an 8-bar intro. The melody is: G4 (quarter), A4 (quarter), B4 (quarter), C5 (quarter), G4 (quarter), A4 (quarter), B4 (quarter), C5 (quarter), G4 (quarter), A4 (quarter), B4 (quarter), C5 (quarter), G4 (quarter), A4 (quarter), B4 (quarter), C5 (quarter). The second staff continues the melody: G4 (quarter), A4 (quarter), B4 (quarter), C5 (quarter), G4 (quarter), A4 (quarter), B4 (quarter), C5 (quarter), G4 (quarter), A4 (quarter), B4 (quarter), C5 (quarter), G4 (quarter), A4 (quarter), B4 (quarter), C5 (quarter). The piece ends with a repeat sign.

Cha-cha-cha

1 bar intro

Musical notation for the 'Cha-cha-cha' section, 1 bar intro. It consists of two staves in 4/4 time. The first staff contains a sequence of quarter notes: G4, A4, B4, C5, followed by a quarter rest. The second staff contains a sequence of quarter notes: D5, E5, F5, G5, followed by a quarter rest. The piece ends with a double bar line.

D & E Tango

D E
0 1

1 bar intro

Musical notation for the 'D & E Tango' section, 1 bar intro. It begins with two chords: D (represented by a whole note on the second line) and E (represented by a whole note on the third line). Below these notes are the numbers '0' and '1' respectively. This is followed by two staves in 4/4 time. The first staff contains a sequence of quarter notes: G4, A4, B4, C5, followed by a quarter rest. The second staff contains a sequence of quarter notes: D5, E5, F5, G5, followed by a quarter rest. The piece ends with a double bar line.

Light Latin

1 bar intro

Musical notation for the 'Light Latin' section, 1 bar intro. It consists of two staves in 4/4 time. The first staff contains a sequence of quarter notes: G4, A4, B4, C5, followed by a quarter rest. The second staff contains a sequence of quarter notes: D5, E5, F5, G5, followed by a quarter rest. The piece ends with a double bar line.

Moving It

2 bars intro

Musical notation for 'Moving It' in 4/4 time. It consists of two staves. The first staff begins with a treble clef and a 4/4 time signature. The melody consists of quarter notes: D4, E4, F4, G4, A4, B4, C5, B4, A4, G4, F4, E4, D4. The second staff continues the melody with quarter notes: C5, B4, A4, G4, F4, E4, D4, C4, B3, A3, G3, F3, E3, D3. Both staves end with a double bar line.

Chant

4 bars intro

Musical notation for 'Chant' in 4/4 time. It consists of two staves. The first staff begins with a treble clef and a 4/4 time signature. The melody consists of quarter notes: D4, E4, F4, G4, A4, B4, C5, B4, A4, G4, F4, E4, D4. The second staff continues the melody with quarter notes: C5, B4, A4, G4, F4, E4, D4, C4, B3, A3, G3, F3, E3, D3. Both staves end with a double bar line.

March on Two Fingers

D E F#

2 bars intro

Musical notation for 'March on Two Fingers' in 4/4 time. It consists of three staves. The first staff shows a chord diagram for the first three notes: D (finger 0), E (finger 1), and F# (finger 2). The second staff begins with a treble clef and a 4/4 time signature. The melody consists of quarter notes: D4, E4, F#4, G4, A4, B4, C5, B4, A4, G4, F#4, E4, D4. The third staff continues the melody with quarter notes: C5, B4, A4, G4, F#4, E4, D4, C4, B3, A3, G3, F#3, E3, D3. Both the second and third staves end with a double bar line.

Welsh Tune

2 bars intro

Musical notation for the Welsh Tune, consisting of two staves of music in 4/4 time. The first staff contains the first two bars of the intro, and the second staff contains the next two bars. The melody is written in treble clef with a key signature of one sharp (F#).

French Tune

2 bars intro

Musical notation for the French Tune, consisting of two staves of music in 4/4 time. The first staff contains the first two bars of the intro, and the second staff contains the next two bars. The melody is written in treble clef with a key signature of one sharp (F#).

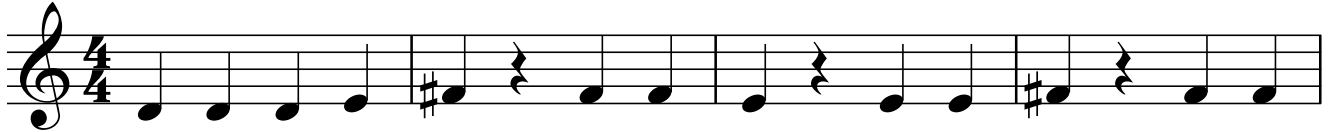
Mary's Lamb

2 bars intro

Musical notation for Mary's Lamb, consisting of two staves of music in 4/4 time. The first staff contains the first two bars of the intro, and the second staff contains the next two bars. The melody is written in treble clef with a key signature of one sharp (F#).

Peter's Hammer

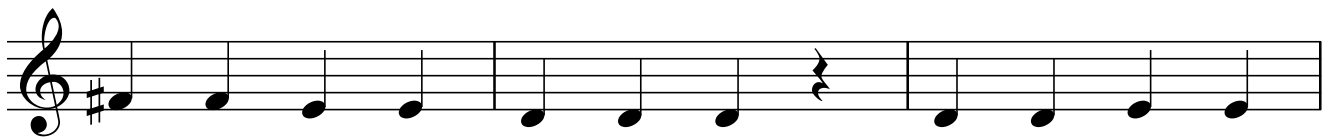
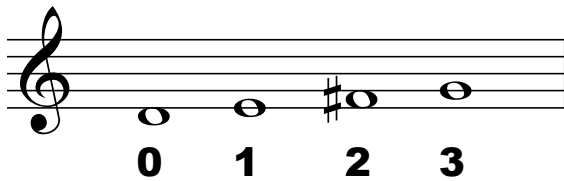
4 bars intro



Up the String to Three We Go

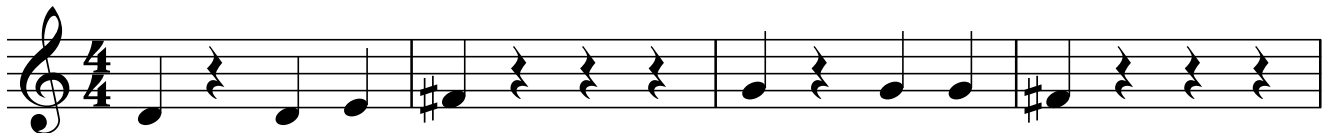
D E F# G

4 bars intro



Pease Pudding

4 bars intro



Clown Dance

4 bars intro

Musical notation for "Clown Dance" in 4/4 time. It consists of two staves. The first staff contains an 8-measure introduction, and the second staff contains the main melody of 8 measures.

4/4

4 bars intro

Andrew Mine

2 bars intro

Musical notation for "Andrew Mine" in 4/4 time. It consists of two staves. The first staff contains a 4-measure introduction, and the second staff contains the main melody of 8 measures.

4/4

2 bars intro

Bells of Vendome

4 bars intro

Musical notation for "Bells of Vendome" in 4/4 time. It consists of two staves. The first staff contains an 8-measure introduction, and the second staff contains the main melody of 8 measures.

4/4

4 bars intro

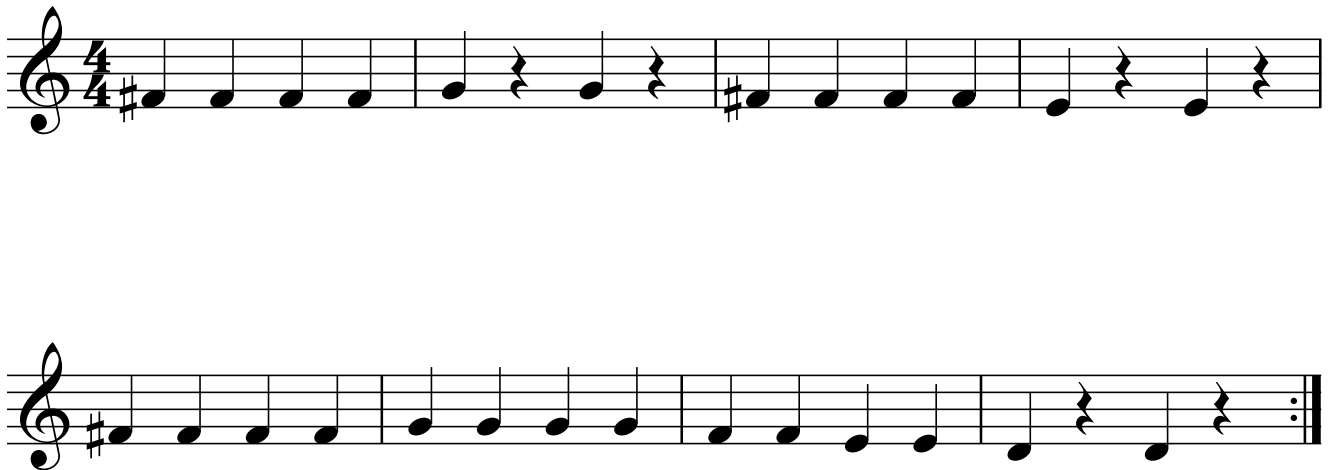
Rigadoon

2 bars intro



Bile 'em cabbage down

4 bars intro



Highly Strung

20 pieces for beginning violists



Barney's Boogie

D 2 bars intro 1 2 3 4 1 2 3 4

0 1 2 3 4 1 2 3 4

Rock It

4 bars intro

4 bars intro

Easy Going

8 bars intro

8 bars intro

Cha-cha-cha

1 bar intro

Musical notation for the 'Cha-cha-cha' section, 1 bar intro. It consists of two staves in 9/4 time. The first staff contains four measures of music: a quarter note G4, a quarter note A4, a quarter note B4, and a quarter rest. The second staff contains four measures of music: a quarter note G4, a quarter note A4, a quarter note B4, and a quarter rest. The piece ends with a double bar line.

D & E Tango

D E

1 bar intro

Musical notation for the 'D & E Tango' section, 1 bar intro. It starts with two notes on a single staff: a whole note D4 and a whole note E4. Below these notes are the numbers '0' and '1' respectively. This is followed by two staves in 9/4 time. The first staff contains four measures of music: a quarter note G4, a quarter note A4, a quarter note B4, and a quarter note G4. The second staff contains four measures of music: a quarter note G4, a quarter note A4, a quarter note B4, and a quarter rest. The piece ends with a double bar line.

Musical notation for the 'D & E Tango' section, first staff. It contains four measures of music: a quarter note G4, a quarter note A4, a quarter note B4, and a quarter note G4.

Musical notation for the 'D & E Tango' section, second staff. It contains four measures of music: a quarter note G4, a quarter note A4, a quarter note B4, and a quarter rest.

Light Latin

1 bar intro

Musical notation for the 'Light Latin' section, 1 bar intro. It consists of two staves in 9/4 time. The first staff contains four measures of music: a quarter note G4, a quarter note A4, a quarter note B4, and a quarter note G4. The second staff contains four measures of music: a quarter note G4, a quarter note A4, a quarter note B4, and a quarter rest.

Musical notation for the 'Light Latin' section, first staff. It contains four measures of music: a quarter note G4, a quarter note A4, a quarter note B4, and a quarter note G4.

Musical notation for the 'Light Latin' section, second staff. It contains four measures of music: a quarter note G4, a quarter note A4, a quarter note B4, and a quarter rest.

Moving It

2 bars intro

Musical notation for 'Moving It' in 9/4 time. It consists of two staves. The first staff has four measures: the first two measures each contain a quarter note followed by a quarter rest, and the last two measures each contain a quarter note followed by a quarter rest. The second staff has four measures: the first two measures each contain a quarter note followed by a quarter rest, and the last two measures each contain a quarter note followed by a quarter rest. The piece ends with a double bar line.

Chant

4 bars intro

Musical notation for 'Chant' in 9/4 time. It consists of two staves. The first staff has four measures: the first two measures each contain a quarter note followed by a quarter rest, and the last two measures each contain a quarter note followed by a quarter rest. The second staff has four measures: the first two measures each contain a quarter note followed by a quarter rest, and the last two measures each contain a quarter note followed by a quarter rest. The piece ends with a double bar line.

March on Two Fingers

D E F#

2 bars intro

Musical notation for 'March on Two Fingers' in 9/4 time. It begins with a key signature of one sharp (F#) and a 2-bar intro. The first staff shows the key signature change: a whole note D, a whole note E, and a whole note F#. Below this staff are the fingerings: 0, 1, and 2. The main piece consists of three staves. The first staff has four measures: the first two measures each contain a quarter note followed by a quarter rest, and the last two measures each contain a quarter note followed by a quarter rest. The second staff has four measures: the first two measures each contain a quarter note followed by a quarter rest, and the last two measures each contain a quarter note followed by a quarter rest. The third staff has four measures: the first two measures each contain a quarter note followed by a quarter rest, and the last two measures each contain a quarter note followed by a quarter rest. The piece ends with a double bar line.

Welsh Tune

2 bars intro

Musical notation for the Welsh Tune, consisting of two staves of music in 9/4 time. The first staff contains the first four measures of the two-bar intro, and the second staff contains the next four measures, ending with a double bar line.

French Tune

2 bars intro

Musical notation for the French Tune, consisting of two staves of music in 9/4 time. The first staff contains the first four measures of the two-bar intro, and the second staff contains the next four measures, ending with a double bar line.

Mary's Lamb

2 bars intro

Musical notation for Mary's Lamb, consisting of two staves of music in 9/4 time. The first staff contains the first four measures of the two-bar intro, and the second staff contains the next four measures, ending with a double bar line.

Peter's Hammer

4 bars intro

Musical notation for the 4-bar intro of 'Peter's Hammer'. The piece is in 2/4 time with a key signature of one sharp (F#). The first staff contains four measures: G4 quarter, A4 quarter, B4 quarter, C5 quarter; F#4 quarter, G4 quarter, A4 quarter, B4 quarter; G4 quarter, F#4 quarter, E4 quarter, D4 quarter; F#4 quarter, G4 quarter, A4 quarter, B4 quarter. The second staff contains four measures: G4 quarter, A4 quarter, B4 quarter, C5 quarter; F#4 quarter, G4 quarter, A4 quarter, B4 quarter; G4 quarter, F#4 quarter, E4 quarter, D4 quarter; F#4 quarter, G4 quarter, A4 quarter, B4 quarter, ending with a repeat sign.

Up the String to Three We Go

D E F# G

4 bars intro

Musical notation for the 4-bar intro of 'Up the String to Three We Go'. The first staff shows four whole notes: D4, E4, F#4, G4. Below the staff are the fingerings: 0, 1, 2, 3. The second staff contains four measures: D4 quarter, E4 quarter, F#4 quarter, G4 quarter; D4 quarter, E4 quarter, F#4 quarter, G4 quarter; D4 quarter, E4 quarter, F#4 quarter, G4 quarter; D4 quarter, E4 quarter, F#4 quarter, G4 quarter.

Musical notation for the continuation of 'Up the String to Three We Go'. The first staff contains four measures: D4 quarter, E4 quarter, F#4 quarter, G4 quarter; D4 quarter, E4 quarter, F#4 quarter, G4 quarter; D4 quarter, E4 quarter, F#4 quarter, G4 quarter; D4 quarter, E4 quarter, F#4 quarter, G4 quarter. The second staff contains four measures: D4 quarter, E4 quarter, F#4 quarter, G4 quarter; D4 quarter, E4 quarter, F#4 quarter, G4 quarter; D4 quarter, E4 quarter, F#4 quarter, G4 quarter; D4 quarter, E4 quarter, F#4 quarter, G4 quarter, ending with a repeat sign.

Pease Pudding

4 bars intro

Musical notation for the 4-bar intro of 'Pease Pudding'. The piece is in 2/4 time with a key signature of one sharp (F#). The first staff contains four measures: G4 quarter, A4 quarter, B4 quarter, C5 quarter; F#4 quarter, G4 quarter, A4 quarter, B4 quarter; G4 quarter, F#4 quarter, E4 quarter, D4 quarter; F#4 quarter, G4 quarter, A4 quarter, B4 quarter. The second staff contains four measures: G4 quarter, A4 quarter, B4 quarter, C5 quarter; F#4 quarter, G4 quarter, A4 quarter, B4 quarter; G4 quarter, F#4 quarter, E4 quarter, D4 quarter; F#4 quarter, G4 quarter, A4 quarter, B4 quarter, ending with a repeat sign.

Clown Dance

4 bars intro



Andrew Mine

2 bars intro



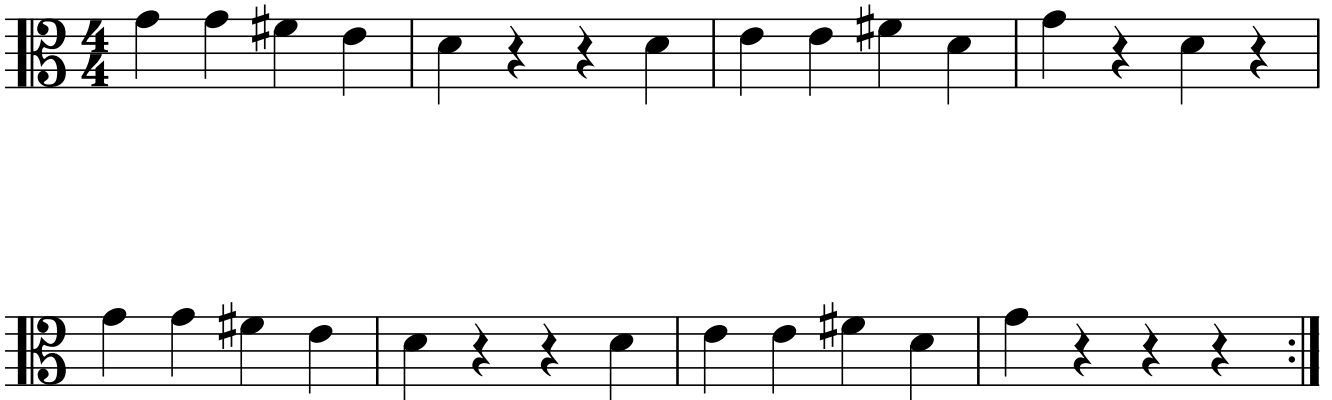
Bells of Vendome

4 bars intro



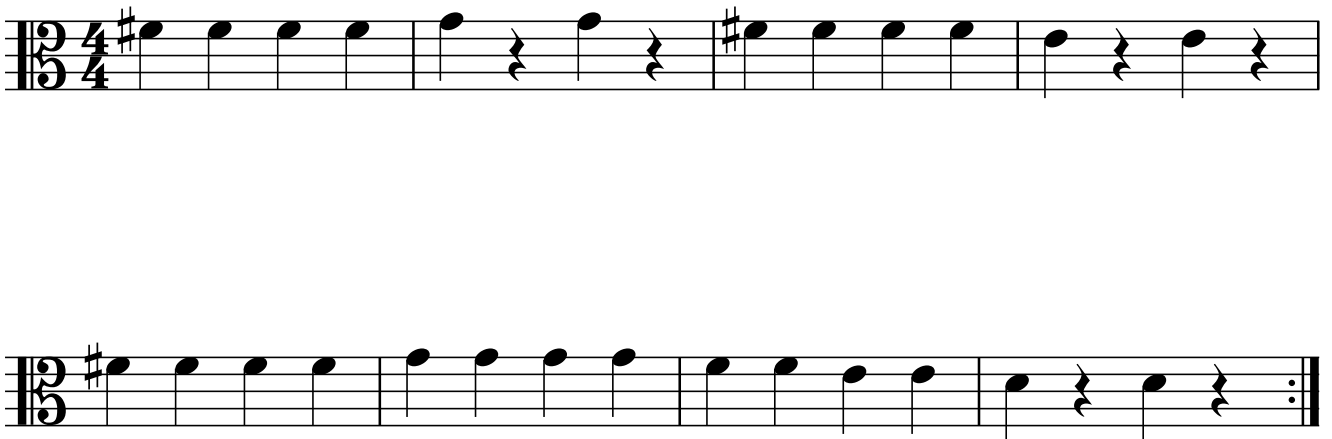
Rigadoon

2 bars intro



Bile 'em cabbage down

4 bars intro



Highly Strung

20 pieces for beginning cellists



Barney's Boogie

D 2 bars intro

1 2 3 4 1 2 3 4

0

1 2 3 4 1 2 3 4

Rock It

4 bars intro

Easy Going

8 bars intro

Cha-cha-cha

1 bar intro



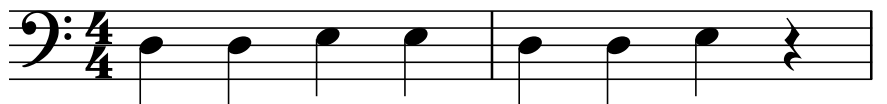
D & E Tango

D E

1 bar intro

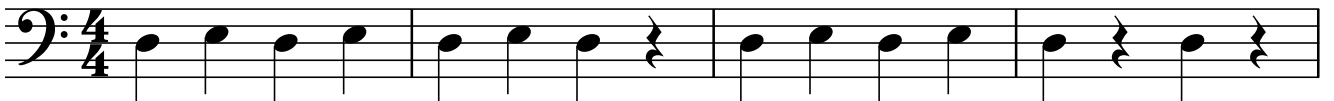


0 1



Light Latin

1 bar intro



Moving It

2 bars intro

Two staves of musical notation in bass clef, 4/4 time. The first staff contains two measures of a four-note sequence (D, E, F#, G) with a quarter rest, followed by two more measures of the same sequence. The second staff contains two more measures of the same sequence, ending with a double bar line.

Chant

4 bars intro

Two staves of musical notation in bass clef, 4/4 time. The first staff contains four measures of a four-note sequence (D, E, F#, G) with a quarter rest. The second staff contains four more measures of the same sequence, ending with a double bar line.

March on Two Fingers

D E F#

2 bars intro

Three staves of musical notation in bass clef, 4/4 time. The first staff shows three notes (D, E, F#) with fingerings 0, 1, and 3 respectively. The second staff contains two measures of a four-note sequence (D, E, F#, G) with a quarter rest, followed by two more measures of the same sequence. The third staff contains two more measures of the same sequence, ending with a double bar line.

Welsh Tune

2 bars intro

The Welsh Tune is written in bass clef with a 4/4 time signature. The first staff contains two measures of music: the first measure has a quarter note G2, a quarter note A2, and a quarter note B2; the second measure has a quarter note C3, a quarter note D3, and a quarter note E3. The second staff contains two more measures: the first measure has a quarter note F3, a quarter note G3, and a quarter note A3; the second measure has a quarter note B3, a quarter note C4, and a quarter note D4. The piece ends with a double bar line.

French Tune

2 bars intro

The French Tune is written in bass clef with a 4/4 time signature. The first staff contains two measures of music: the first measure has a quarter note G2, a quarter note A2, and a quarter note B2; the second measure has a quarter note C3, a quarter note D3, and a quarter note E3. The second staff contains two more measures: the first measure has a quarter note F3, a quarter note G3, and a quarter note A3; the second measure has a quarter note B3, a quarter note C4, and a quarter note D4. The piece ends with a double bar line.

Mary's Lamb

2 bars intro

Mary's Lamb is written in bass clef with a 4/4 time signature. The first staff contains two measures of music: the first measure has a quarter note G2, a quarter note A2, and a quarter note B2; the second measure has a quarter note C3, a quarter note D3, and a quarter note E3. The second staff contains two more measures: the first measure has a quarter note F3, a quarter note G3, and a quarter note A3; the second measure has a quarter note B3, a quarter note C4, and a quarter note D4. The piece ends with a double bar line.

Peter's Hammer

4 bars intro

Musical notation for the 4-bar intro of 'Peter's Hammer'. It consists of two staves of bass clef music in 4/4 time. The first staff contains four measures: a quarter note D2, quarter note E2, quarter note F#2, quarter note G2; a quarter note G2, quarter rest, quarter note A2, quarter note B2; a quarter note B2, quarter rest, quarter note C3, quarter note D3; a quarter note D3, quarter rest, quarter note E3, quarter note F#3. The second staff contains four measures: a quarter note F#3, quarter note G3, quarter note A3, quarter note B3; a quarter note B3, quarter rest, quarter note C4, quarter note D4; a quarter note D4, quarter rest, quarter note E4, quarter note F#4; a quarter note F#4, quarter rest, quarter note G4, quarter note A4. The piece ends with a double bar line and repeat dots.

Up the String to Four We Go

D E F# G

4 bars intro

Musical notation for the 4-bar intro of 'Up the String to Four We Go'. It consists of two staves of bass clef music in 4/4 time. The first staff shows four whole notes: D2, E2, F#2, G2. Below these notes are the fingerings: 0, 1, 3, 4. The second staff contains four measures: a quarter note D2, quarter note E2, quarter note F#2, quarter note G2; a quarter note G2, quarter note A2, quarter note B2, quarter rest; a quarter note B2, quarter note C3, quarter note D3, quarter note E3; a quarter note E3, quarter note F#3, quarter note G3, quarter note A3. The piece ends with a double bar line and repeat dots.

Musical notation for the main body of 'Up the String to Four We Go', consisting of two staves of bass clef music in 4/4 time. The first staff contains four measures: a quarter note B3, quarter note C4, quarter note D4, quarter note E4; a quarter note E4, quarter note F#4, quarter note G4, quarter rest; a quarter note G4, quarter note A4, quarter note B4, quarter note C5; a quarter note C5, quarter note D5, quarter note E5, quarter note F#5. The second staff contains four measures: a quarter note F#5, quarter note G5, quarter note A5, quarter note B5; a quarter note B5, quarter note C6, quarter note D6, quarter note E6; a quarter note E6, quarter note F#6, quarter note G6, quarter note A6; a quarter note A6, quarter note B6, quarter note C7, quarter note D7. The piece ends with a double bar line and repeat dots.

Pease Pudding

4 bars intro

Musical notation for the 4-bar intro of 'Pease Pudding'. It consists of two staves of bass clef music in 4/4 time. The first staff contains four measures: a quarter note D2, quarter rest, quarter note E2, quarter note F#2; a quarter note G2, quarter rest, quarter rest, quarter rest; a quarter note A2, quarter note B2, quarter note C3, quarter note D3; a quarter note D3, quarter rest, quarter rest, quarter rest. The second staff contains four measures: a quarter note E3, quarter note F#3, quarter note G3, quarter note A3; a quarter note B3, quarter note C4, quarter note D4, quarter note E4; a quarter note E4, quarter note F#4, quarter note G4, quarter note A4; a quarter note B4, quarter note C5, quarter note D5, quarter note E5. The piece ends with a double bar line and repeat dots.

Clown Dance

4 bars intro

Two staves of musical notation in bass clef, 4/4 time. The first staff contains four measures: G2, A2, B2, C3; D2, E2, F2, G2; A2, B2, C3, D3; E2, F2, G2, A2. The second staff contains four measures: B2, C3, D3, E3; F3, G3, A3, B3; C4, D4, E4, F4; G4, A4, B4, C5. The piece ends with a double bar line and repeat dots.

Andrew Mine

2 bars intro

Two staves of musical notation in bass clef, 4/4 time. The first staff contains two measures: G2, A2, B2, C3; D2, E2, F2, G2. The second staff contains two measures: A2, B2, C3, D3; E2, F2, G2, A2. The piece ends with a double bar line and repeat dots.

Bells of Vendome

4 bars intro

Two staves of musical notation in bass clef, 4/4 time. The first staff contains four measures: G2, A2, B2, C3; D2, E2, F2, G2; A2, B2, C3, D3; E2, F2, G2, A2. The second staff contains four measures: B2, C3, D3, E3; F3, G3, A3, B3; C4, D4, E4, F4; G4, A4, B4, C5. The piece ends with a double bar line and repeat dots.

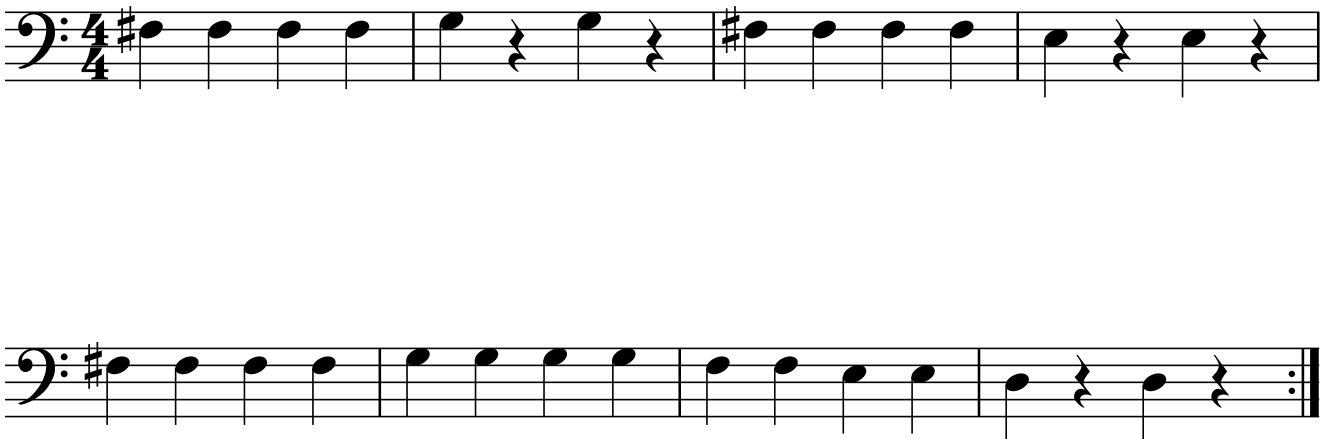
Rigadoon

2 bars intro



Bile 'em cabbage down

4 bars intro



Highly Strung

20 pieces for beginning string players



Barney's Boogie

2 bars intro

1 2 3 4

1 2 3 4

1 2 3 4

1 2 3 4

Musical notation for Barney's Boogie in 4/4 time. The first staff begins with a 4/4 time signature and a 2-bar introduction consisting of three quarter notes (D, D, D). The main piece consists of two 4-measure phrases. The first phrase has a quarter rest in the first measure, followed by quarter notes in measures 2, 3, and 4. The second phrase has quarter notes in measures 1, 2, and 3, followed by a quarter rest in measure 4. The piece ends with a repeat sign.

Rock It

4 bars intro

4/4

Musical notation for Rock It in 4/4 time. The first staff begins with a 4/4 time signature and a 4-bar introduction consisting of four quarter notes (D, D, D, D). The main piece consists of two 4-measure phrases. The first phrase has quarter notes in measures 1, 2, and 3, followed by a quarter rest in measure 4. The second phrase has quarter notes in measures 1, 2, and 3, followed by a quarter rest in measure 4. The piece ends with a double bar line.

Easy Going

8 bars intro

4/4

Musical notation for Easy Going in 4/4 time. The first staff begins with a 4/4 time signature and an 8-bar introduction consisting of quarter notes in measures 1, 2, and 3, followed by a quarter rest in measure 4. The main piece consists of two 4-measure phrases. The first phrase has quarter notes in measures 1, 2, and 3, followed by a quarter rest in measure 4. The second phrase has quarter notes in measures 1, 2, and 3, followed by a quarter rest in measure 4. The piece ends with a double bar line.

Cha-cha-cha

1 bar intro

Musical notation for Cha-cha-cha in 4/4 time. The first line contains a 1-bar intro (4/4) followed by two measures of notes (D, D, D) and rests, and two measures of notes (D, D, D, D) and rests. The second line continues with two measures of notes (D, D, D) and rests, and two measures of notes (D, D, D, D) and rests.

D & E Tango

1 bar intro

Musical notation for D & E Tango in 4/4 time. The first line contains a 1-bar intro (4/4) followed by two measures of notes (D, D, E, E) and rests, and two measures of notes (D, D, E, E) and rests. The second line continues with two measures of notes (D, D, E, E) and rests, and two measures of notes (D, D, D) and rests.

Light Latin

1 bar intro

Musical notation for Light Latin in 4/4 time. The first line contains a 1-bar intro (4/4) followed by two measures of notes (D, E, D, E) and rests, and two measures of notes (D, E, D, E) and rests. The second line continues with two measures of notes (D, E, D, E) and rests, and two measures of notes (D, D) and rests.

Moving It

2 bars intro

Musical notation for 'Moving It' in 4/4 time, 2 bars intro. The notation consists of two staves. The first staff has a 4/4 time signature and contains two measures of music. The notes are D, D, E, and D, D, E, E. The second staff also has a 4/4 time signature and contains two measures of music. The notes are D, D, E, and D, D, D. The notation includes stems, beams, and repeat signs.

Chant

4 bars intro

Musical notation for 'Chant' in 4/4 time, 4 bars intro. The notation consists of two staves. The first staff has a 4/4 time signature and contains four measures of music. The notes are E, E, E, E, E, E, E, and D, D, D, D, E, E, E. The second staff also has a 4/4 time signature and contains four measures of music. The notes are E, E, E, E, E, E, E, and D, D, D, D, E, E, E. The notation includes stems, beams, and repeat signs.

March on Two Fingers

2 bars intro

Musical notation for 'March on Two Fingers' in 4/4 time, 2 bars intro. The notation consists of two staves. The first staff has a 4/4 time signature and contains two measures of music. The notes are D, D, E, E, F#, F#, E, and D, D, E, E, F#, E, D. The second staff also has a 4/4 time signature and contains two measures of music. The notes are D, D, E, E, F#, F#, E, and D, D, E, E, F#, E, D. The notation includes stems, beams, and repeat signs.

Welsh Tune

2 bars intro

4/4

D E F# E D E D E F# E F# D

D E F# E D E D E F# E F# D

French Tune

2 bars intro

4/4

D D D E F# E D F# E E D

D D D E F# E D F# E E D

Mary's Lamb

2 bars intro

4/4

F# E D E F# F# F# E E E F# F# F#

F# E D E F# F# F# F# E E F# E D

Peter's Hammer

4 bars intro

Musical notation for Peter's Hammer in 4/4 time, 4 bars intro. The notation consists of two staves. The first staff contains 12 notes: D, D, D, E, F#, F#, F#, E, E, E, F#, F#, F#. The second staff contains 10 notes: D, D, D, E, F#, F#, F#, E, E, D. The piece ends with a repeat sign.

Up the String to Three We Go

4 bars intro

Musical notation for Up the String to Three We Go in 4/4 time, 4 bars intro. The notation consists of two staves. The first staff contains 12 notes: D, D, E, E, F#, F#, G, F#, F#, E, E, D, D, D. The second staff contains 12 notes: D, D, E, E, F#, F#, G, F#, F#, E, E, D, D, D. The piece ends with a double bar line.

Pease Pudding

4 bars intro

Musical notation for Pease Pudding in 4/4 time, 4 bars intro. The notation consists of two staves. The first staff contains 12 notes: D, D, E, F#, G, G, G, F#. The second staff contains 10 notes: D, D, E, F#, F#, F#, E, E, D. The piece ends with a repeat sign.

Clown Dance

4 bars intro

Musical notation for "Clown Dance" in 4/4 time, 4 bars intro. The notation consists of two staves. The first staff contains the first four bars of the intro, and the second staff contains the next four bars. The notes are as follows:

Staff 1: D, E, F#, F#, G | G, G, F#, E, F#, D | E, E

Staff 2: D, E, F#, F#, G | G, G, F#, D, E, E | D, D

Andrew Mine

2 bars intro

Musical notation for "Andrew Mine" in 4/4 time, 2 bars intro. The notation consists of two staves. The first staff contains the first two bars of the intro, and the second staff contains the next two bars. The notes are as follows:

Staff 1: D, D, F# | D, D, F# | G, F#, E, D | E, D

Staff 2: D, D, F# | D, D, F# | G, F#, E, D | E, D

Bell of Vendome

4 bars intro

Musical notation for "Bell of Vendome" in 4/4 time, 4 bars intro. The notation consists of two staves. The first staff contains the first four bars of the intro, and the second staff contains the next four bars. The notes are as follows:

Staff 1: E, F#, D | E, F#, D | E, F#, G, F#, E, F#, D

Staff 2: E, F#, D | E, F#, D | E, F#, G, F#, E, F#, D

Rigadoon

2 bars intro

4/4

G G F# E D D E E F# D G D

G G F# E D D E E F# D G

Bile 'em cabbage down

4 bars intro

4/4

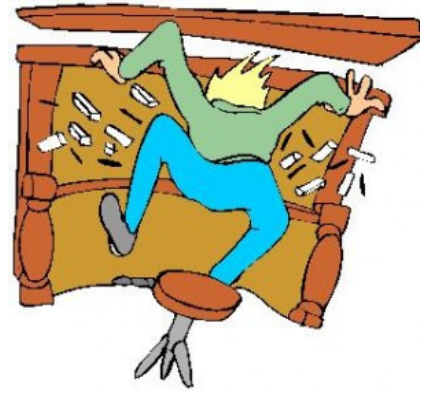
F# F# F# F# G G F# F# F# F# E E

F# F# F# F# G G G G F# F# E E D D



Highly Strung

20 pieces for beginning violinists & violists



Barney's Boogie

2 bars intro 1 2 3 4 1 2 3 4

0 0 0 0 0 0 0 0 0

1 2 3 4 1 2 3 4

0 0 0 0 0 0 0 0 0

The musical notation for 'Barney's Boogie' is written on two staves in 4/4 time. The first staff begins with a 2-bar introduction of quarter notes on the open string (0). The main melody consists of quarter notes on the open string (0) with a rhythmic pattern of quarter, eighth, eighth, quarter. The piece ends with a repeat sign.

Rock It

4 bars intro

0 0 0 0 0 0 0 0 0 0 0 0 0 0 0 0 0 0 0

0 0 0 0 0 0 0 0 0 0 0 0 0 0 0

The musical notation for 'Rock It' is written on two staves in 4/4 time. It begins with a 4-bar introduction of quarter notes on the open string (0). The main melody consists of quarter notes on the open string (0) with a rhythmic pattern of quarter, eighth, eighth, quarter. The piece ends with a double bar line.

Easy Going

8 bars intro

0 0 0 0 0 0 0 0 0 0 0 0 0 0 0 0 0 0 0

0 0 0 0 0 0 0 0 0 0 0 0 0 0 0 0 0

The musical notation for 'Easy Going' is written on two staves in 4/4 time. It begins with an 8-bar introduction of quarter notes on the open string (0). The main melody consists of quarter notes on the open string (0) with a rhythmic pattern of quarter, eighth, eighth, quarter. The piece ends with a double bar line.

Cha-cha-cha

1 bar intro

D & E Tango

1 bar intro

Light Latin

1 bar intro

Moving It

2 bars intro

Musical notation for 'Moving It' in 4/4 time. The first staff begins with a 4/4 time signature. The melody consists of two staves. The first staff has notes on the first line (G4, A4, B4) and the second line (C5, D5, E5). The second staff has notes on the first line (G4, A4, B4) and the second line (C5, D5, E5). Fingerings are indicated by numbers 0, 1, and 2 below the notes. The piece ends with a double bar line.

Chant

4 bars intro

Musical notation for 'Chant' in 4/4 time. The first staff begins with a 4/4 time signature. The melody consists of two staves. The first staff has notes on the first line (G4, A4, B4, C5) and the second line (D5, E5, F5, G5). The second staff has notes on the first line (G4, A4, B4, C5) and the second line (D5, E5, F5, G5). Fingerings are indicated by numbers 1 and 0 below the notes. The piece ends with a double bar line.

March on Two Fingers

2 bars intro

Musical notation for 'March on Two Fingers' in 4/4 time. The first staff begins with a 4/4 time signature. The melody consists of two staves. The first staff has notes on the first line (G4, A4, B4, C5) and the second line (D5, E5, F5, G5). The second staff has notes on the first line (G4, A4, B4, C5) and the second line (D5, E5, F5, G5). Fingerings are indicated by numbers 0, 1, 2 below the notes. The piece ends with a double bar line.

Welsh Tune

2 bars intro

0 1 2 | 1 0 1 | 0 1 2 | 1 2 0

0 1 2 | 1 0 1 | 0 1 2 | 1 2 0

French Tune

2 bars intro

0 0 0 1 2 | 1 | 0 2 1 1 0 |

0 0 0 1 2 | 1 | 0 2 1 1 0 |

Mary's Lamb

2 bars intro

2 1 0 1 | 2 2 2 | 1 1 1 | 2 2 2

2 1 0 1 | 2 2 2 2 | 1 1 2 1 | 0

Peter's Hammer

4 bars intro

Musical notation for "Peter's Hammer" in 4/4 time, 4 bars intro. The notation consists of two staves. The first staff shows the first four bars with fingerings: 0, 0, 0, 1, 2, 2, 2, 1, 1, 1, 2, 2, 2. The second staff shows the next four bars with fingerings: 0, 0, 0, 1, 2, 2, 2, 1, 1, 0, and a repeat sign at the end.

Up the String to Three We Go

4 bars intro

Musical notation for "Up the String to Three We Go" in 4/4 time, 4 bars intro. The notation consists of two staves. The first staff shows the first four bars with fingerings: 0, 0, 1, 1, 2, 2, 3, 2, 2, 1, 1, 0, 0, 0. The second staff shows the next four bars with fingerings: 0, 0, 1, 1, 2, 2, 3, 2, 2, 1, 1, 0, 0, 0, and a repeat sign at the end.

Pease Pudding

4 bars intro

Musical notation for "Pease Pudding" in 4/4 time, 4 bars intro. The notation consists of two staves. The first staff shows the first four bars with fingerings: 0, 0, 1, 2, 3, 3, 3, 2. The second staff shows the next four bars with fingerings: 0, 0, 1, 2, 2, 2, 1, 1, 0, and a repeat sign at the end.

Clown Dance

4 bars intro

Andrew Mine

2 bars intro

Bell of Vendome

4 bars intro

Rigadoon

2 bars intro

4/4

3 3 2 1 0 0 1 1 2 0 3 0

3 3 2 1 0 0 1 1 2 0 3

Bile 'em cabbage down

4 bars intro

4/4

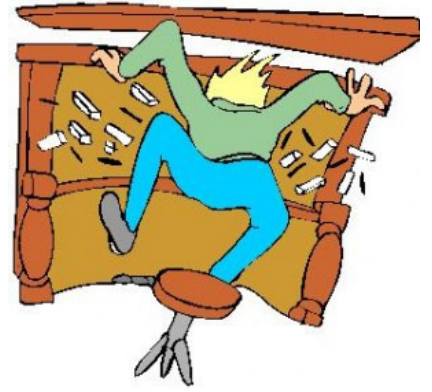
2 2 2 2 3 3 2 2 2 2 1 1

2 2 2 2 3 3 3 3 2 2 1 1 0 0



Highly Strung

20 pieces for beginning cellists



Barney's Boogie

2 bars intro 1 2 3 4 1 2 3 4

0 0 0 0 0 0 0 0 0

0 0 0 0 0 0 0 0 0

Rock It

4 bars intro

0 0 0 0 0 0 0 0 0 0 0 0 0 0 0 0 0 0 0 0 0 0 0

0 0 0 0 0 0 0 0 0 0 0 0 0 0 0 0 0 0 0

Easy Going

8 bars intro

0 0 0 0 0 0 0 0 0 0 0 0 0 0 0 0 0 0 0 0

0 0 0 0 0 0 0 0 0 0 0 0 0 0 0 0 0 0 0 0

Cha-cha-cha

1 bar intro

D & E Tango

1 bar intro

Light Latin

1 bar intro

Moving It

2 bars intro

Musical notation for 'Moving It' in 4/4 time. The first staff begins with a 4/4 time signature. The melody consists of two staves. The first staff has notes on the first line (G4, A4, B4) and the second line (C5, D5, E5). The second staff has notes on the first line (G4, A4, B4) and the second line (C5, D5, E5). Fingerings are indicated by numbers 0, 1, and 3 below the notes. The piece ends with a double bar line.

Chant

4 bars intro

Musical notation for 'Chant' in 4/4 time. The first staff begins with a 4/4 time signature. The melody consists of two staves. The first staff has notes on the first line (G4, A4, B4, C5) and the second line (D5, E5, F5, G5). The second staff has notes on the first line (G4, A4, B4, C5) and the second line (D5, E5, F5, G5). Fingerings are indicated by numbers 1 and 0 below the notes. The piece ends with a double bar line.

March on Two Fingers

2 bars intro

Musical notation for 'March on Two Fingers' in 4/4 time. The first staff begins with a 4/4 time signature. The melody consists of two staves. The first staff has notes on the first line (G4, A4, B4, C5) and the second line (D5, E5, F5, G5). The second staff has notes on the first line (G4, A4, B4, C5) and the second line (D5, E5, F5, G5). Fingerings are indicated by numbers 0, 1, 3 below the notes. The piece ends with a double bar line.

Welsh Tune

2 bars intro

4/4

0 1 3 | 1 0 1 | 0 1 3 | 1 3 0

0 1 3 | 1 0 1 | 0 1 3 | 1 3 0

French Tune

2 bars intro

4/4

0 0 0 1 3 | 1 | 0 3 1 1 0 | 1

0 0 0 1 3 | 1 | 0 3 1 1 0 | 1

Mary's Lamb

2 bars intro

4/4

3 1 0 1 3 3 3 | 1 1 1 | 3 3 3

3 1 0 1 3 3 3 3 | 1 1 3 1 0

Peter's Hammer

4 bars intro

Musical notation for "Peter's Hammer" in 4/4 time, 4 bars intro. The notation consists of two staves. The first staff shows the first four bars with fingerings: 0, 0, 0, 1, 3, 3, 3, 1, 1, 1, 3, 3, 3. The second staff shows the next four bars with fingerings: 0, 0, 0, 1, 3, 3, 3, 1, 1, 0, and ends with a repeat sign. Accents are placed above the notes in bars 2, 4, 6, 8, 10, 12, and 14.

Up the String to Four We Go

4 bars intro

Musical notation for "Up the String to Four We Go" in 4/4 time, 4 bars intro. The notation consists of two staves. The first staff shows the first four bars with fingerings: 0, 0, 1, 1, 3, 3, 4, 3, 3, 1, 1, 0, 0, 0. The second staff shows the next four bars with fingerings: 0, 0, 1, 1, 3, 3, 4, 3, 3, 1, 1, 0, 0, 0. Accents are placed above the notes in bars 2, 4, 6, 8, 10, 12, and 14.

Pease Pudding

4 bars intro

Musical notation for "Pease Pudding" in 4/4 time, 4 bars intro. The notation consists of two staves. The first staff shows the first four bars with fingerings: 0, 0, 1, 3, 4, 4, 4, 3. The second staff shows the next four bars with fingerings: 0, 0, 1, 3, 3, 3, 1, 1, 0. Accents are placed above the notes in bars 2, 4, 6, 8, 10, 12, and 14.

Clown Dance

4 bars intro

0 1 3 3 4 4 4 3 1 3 0 1 1

0 1 3 3 4 4 4 3 0 1 1 0 0

Andrew Mine

2 bars intro

0 0 3 0 0 3 4 3 1 0 1 0

0 0 3 0 0 3 4 3 1 0 1 0

Bell of Vendome

4 bars intro

1 3 0 1 3 0 1 3 4 3 1 3 0

1 3 0 1 3 0 1 3 4 3 1 3 0

Rigadoon

2 bars intro

4/4

4 4 3 1 0 0 1 1 3 0 4 0

4 4 3 1 0 0 1 1 3 0 4

Bile 'em cabbage down

4 bars intro

4/4

3 3 3 3 4 4 3 3 3 3 1 1

3 3 3 3 4 4 4 4 3 3 1 1 0 0

